

GF Freestanding Tub Filler

FEATURES

- Solid brass construction
- Smooth handle control with COMFORT GLIDE® technology
- Diamond-Like Carbon (DLC) coated ceramic cartridge for ultimate durability
- Lever handle
- For use with freestanding tub filler base rough-in (TBN01105U)
- Includes 1.75 gpm handshower
- Balanced COMFORT WAVE® technology with wide coverage rinse & wash
- Meets 2018 California Water Efficiency appliance and leakage regulations by CEC

REQUIRED COMPONENTS

- **TBN01105U** (Sold Separately)
Freestanding Tub Filler Base Rough-In

COLORS/FINISHES

- #CP Polished Chrome
- #BN Brushed Nickel

Made to order

- #PN Polished Nickel
- #PFG Polished French Gold
- #PBR Polished Bronze
- #MBL Matte Black

PRODUCT SPECIFICATION

Slide bar shall be decorative and designed to match any suite. Slide bar shall be TOTO Model TBG11306U#_____

CODES/STANDARDS

- Meets or exceeds ASME A112.18.1/CSA B125.1
- Certifications: IAPMO(cUPC), EPA WaterSense, State of Massachusetts and others
- Code Compliance: UPC, IPC, NSPC, NPC Canada, and others
- California Green Building Code, City of Los Angeles Water Efficiency Ordinance
- Complies with CA Prop 65 warning requirements



COMFORT GLIDE



COMFORT WAVE

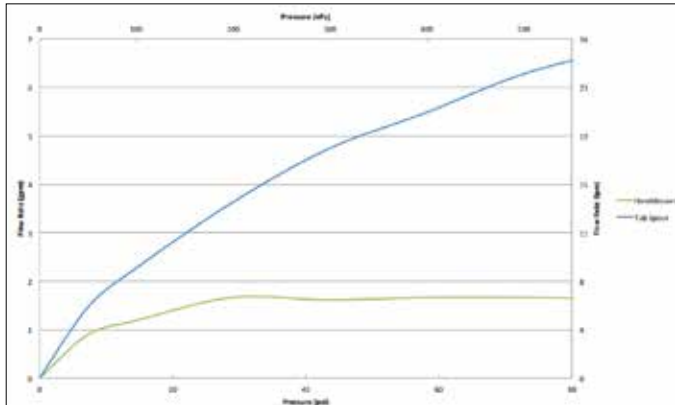


TBG11306U

GF Freestanding Tub Filler

SPECIFICATIONS

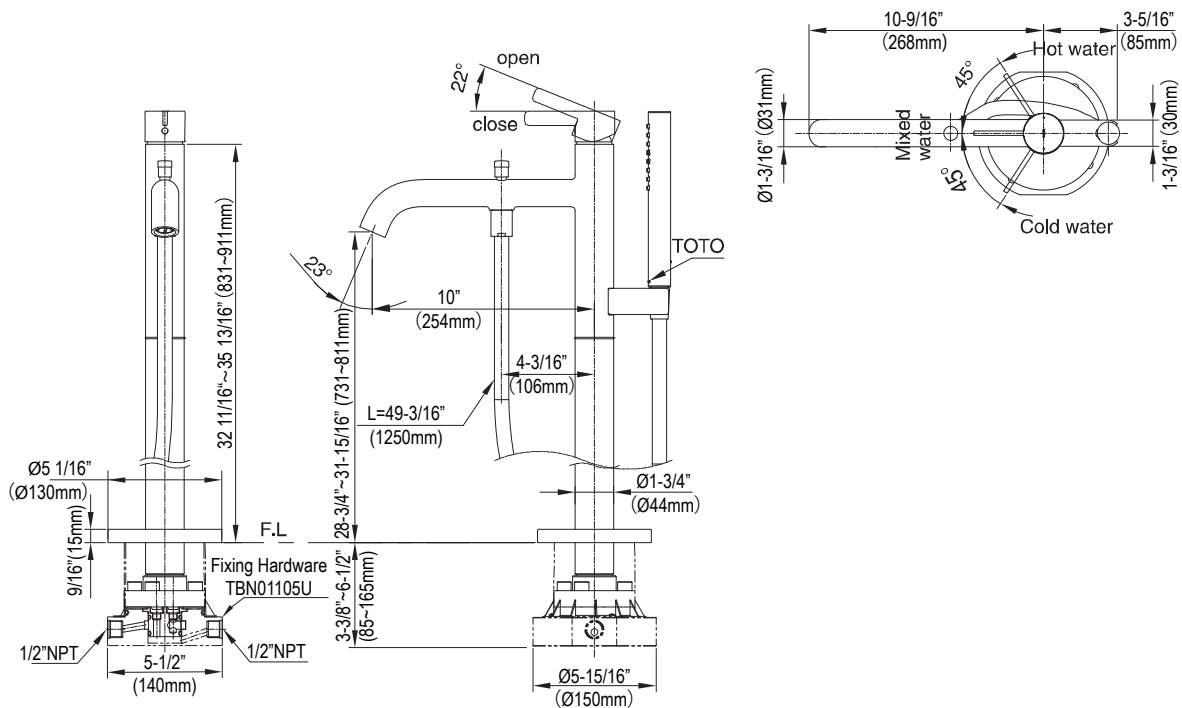
Material	Brass (low-lead)
Maximum Flow Rate	1.75 gpm (6.6 lpm) (Hand Shower)
Warranty	Lifetime Limited Warranty (Residential Use) One Year (Commercial Use)



INSTALLATION NOTES

- Check local codes for requirements on installing an ASSE 1070/ASME A112.1070/CSA B125.70 compliant device in series with the tub filler
- Freestanding tub filler base rough-in TBN01105U sold separately
- Please refer to the TBN01105U spec sheet for more required installation details.

DIMENSIONS



NOTE: The unit of the above dimensions is inches (mm). Tub filler base sold separately.

TOTO®

These dimensions and specifications are subject to change without notice