

INSTALLATION INSTRUCTIONS

Extension for 3/4" Thermostatic Valve
Part #'s: J-TH34-CART, J-TH12-CART

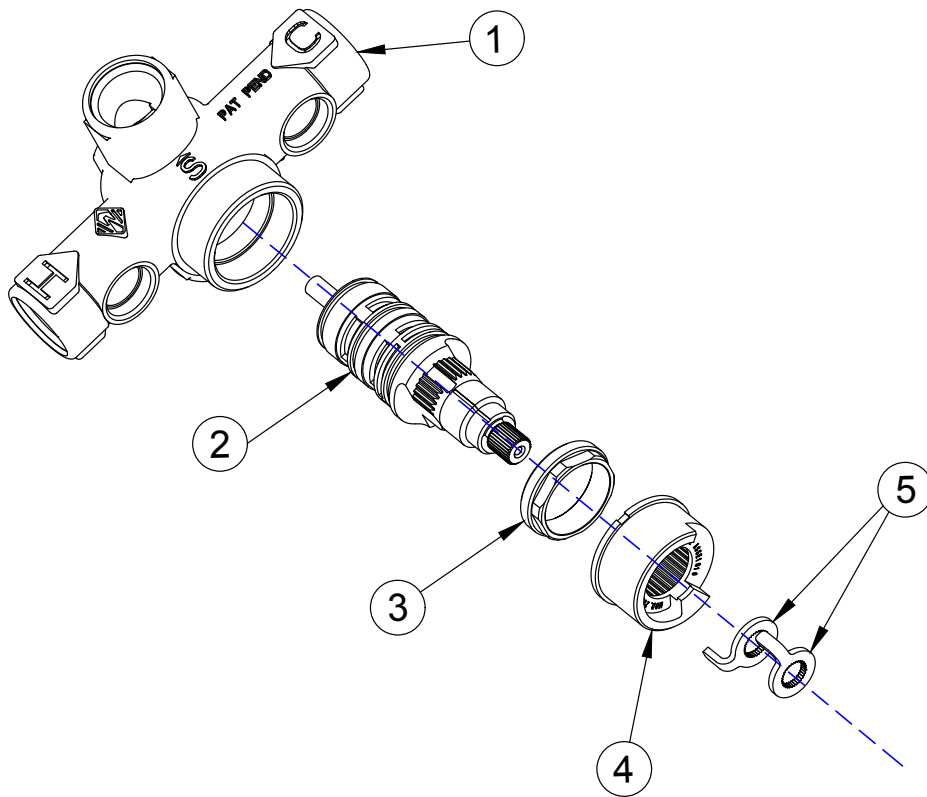


RECOMMENDED TOOLS

1 1/4" (DEEP) SOCKET

PREPARATION

HAVE INSTALLATION INSTRUCTIONS FOR ROUGH AND TRIM ON HAND FOR THIS BEFORE BEGINNING. MAKE SURE WATER IS TURNED OFF, AND RUN ANOTHER FUNCTION ON THAT LINE TO RELIEVE PRESSURE IN LINE. REMOVE HANDLES AND TRIM PLATE (IF INSTALLED)



[J-TH34/J-TH12]

ITEM	DESCRIPTION	QTY	PART #
1	3/4" Thermostatic Body Rough	1	TH34-BODY-RGH / TH12-BODY-RGH
2	3/4" or 1/2" Thermostatic Cartridge	1	J-TH34- CART or J-TH12-CART
3	Thermostatic Cartridge Locknut	1	1050-3-RGH
4	Thermostatic Valve Limit Stop Ring	1	2050-4-0
5	Stainless Steel Limit Stop	2	1050-5-0

REMOVAL

1. Remove handle and trim.
2. Shut off water supply check stops located on thermostatic valve. *(Reference rough in instructions)*
3. Remove Phillips head screw and rough in shield. **DO NOT DISCARD SCREW OR SHIELD**
4. Note position of the limit stops (5). This is the factory setting of maximum temperature. Next, remove limit stops. Retain for reassembly.
5. Remove limit stop ring (4). Retain for reassembly.
6. Remove thermostatic cartridge locknut (3) using 1 1/4" wrench. Retain for reassembly.
7. Remove thermostatic cartridge (2). Pull outward and twist slightly to aid removal. Retain for reassembly.
8. Check for any debris in valve.

INSTALLATION

1. Inspect and remove any debris in thermostatic body, including check stop cavities.
2. Apply lubricant suitable for potable water to the o-rings on the thermostatic cartridge, and insert into valve body rotating back and forth slightly. Orient cartridge with the notch up in the 12 o'clock position for J-TH34 and J-TH12 and 6 o'clock position for J-THVC12.
3. Re-install thermostatic cartridge locknut using a 1-1/4" wrench and tighten nut.

THERMOSTATIC VALVE SET UP *(Reference rough in instructions)*

1. Remove rough in shield and discard if trim is to be installed after valve setup.
2. Turn volume control/diverter to off position.
3. Open hot and cold check stops (should be horizontal, arrow pointing to center of valve).
4. Open volume control/diverter to allow water to flow.
5. Reattach limit stops to original setting
6. Rotate thermostatic valve full counter clockwise and check water temperature with thermometer. Factory setting should be 100° maximum.
7. Limit stop setup:
 - **FOLLOWING STEPS SHOULD BE PERFORMED WITHOUT HANDLE ATTACHED, BY ROTATING VALVE BY HAND ONLY****
 - **DO NOT ROTATE THERMOSTATIC CARTRIDGE PAST THE RESISTANCE POINT. THIS WILL DAMAGE THE CARTRIDGE!****
 - a. Remove limit stops.
 - b. Open volume control/diverter to allow water to flow, run water for 2-5 minutes.
 - c. Rotate thermostatic valve counter clockwise until resistance is felt. Replace hot limit stop so leg is resting against left side of stop ring stop.
 - d. Rotate thermostatic valve clockwise until resistance is felt. Replace cold limit stop so leg is resting against right side of ring stop.
 - e. Turn off water flow.

DIAL POINTER, TRIM, AND HANDLE INSTALLATION *(Reference trim instructions)*

1. Push the dial pointer on to sleeve with pointer on top at 12 o'clock position.
2. Turn on diverter valve to allow water to flow. Measure water temperature and adjust to 100°F.
3. Install dial assembly on to spindle aligning the 100° to the dial pointer.
4. Place adhesive backed foam strip to back side of trim plate.
5. Slide trim plate over sleeve against finished wall.
6. Install handle to desired position using center screw or set screw, trims may vary.
7. **REPLACE TRIM.**

Over Fifty Years of Excellence Proud to be an American Company



CARE INSTRUCTIONS

In order to maintain the high quality finish of JACLO products, please adhere to the following product care instructions:

Cleaning JACLO products: For routine cleaning, simply use a soft damp cloth and common household soap, then rinse and dry. Proper care of your product is important because most water contains calcium that deposits on surfaces, forming unpleasant spots. This can be avoided by routine cleaning and drying after every use. Use only mild soap detergents. JACLO products may be periodically waxed with non abrasive compounds, such as Flitz® faucet wax.

Never use abrasive cleaners, bleach, disinfectants or cleaning products containing alcohol, ammonia, hydrochloric or phosphoric acids as they will damage the product finish.

Please note: Your product warranty may not be valid if the above cleaning guidelines are not followed.

WARRANTY

Residential Warranty: Your new plumbing fixture is warranted by JACLO INDUSTRIES, 129 Dermody Street, Cranford, NJ 07016. This warranty is extended to original consumer purchasers only. This warranty gives you specific legal rights, and you may also have other rights which vary from state to state.

The product (including the finish on the product but excluding any custom finishes and any installation hardware not supplied by JACLO) is warranted to be free from defects in material or workmanship under normal use and service for the lifetime* of the fixture, so long as the original consumer purchaser owns it. JACLO's sole obligation under this or any other warranty is limited to repairing or replacing at JACLO's option, without labor, any part or parts of the fixture which fail to conform to such warranty.

JACLO WILL NOT BE LIABLE FOR ANY CONSEQUENTIAL OR INCIDENTAL DAMAGES CAUSED BY A BREACH OF THIS OR ANY OTHER WARRANTY.

Some states do not allow the exclusion of limitation of incidental or consequential damages, so the above limitation may not apply to you.

To secure warranty performance, the original consumer purchaser must have the fixture properly and professionally installed in accordance with all codes and installation instructions.

Items and actions that will void the JACLO warranty are:

- Abuse, misuse, neglect and accidental damage
- Improper cleaning, care and maintenance of the fixture
- Alteration of the fixture in any way including removal of a flow regulator/restrictor

All warranty claims must be made in accordance with the JACLO return policy (see below).

JACLO does not authorize any distributor, retailer or other person to modify this warranty or assume any liability on its behalf with respect to it. Any question regarding the operation of warranty should be addressed to JACLO's warranty department.

*Due to the unpredictable environment, all kitchen drains, strainers and garbage disposal flanges are warranted for the period of one year from date of purchase from an authorized JACLO dealer.

Un-lacquered Brass (ULB) is a living finish and is excluded from any finish warranty.

Commercial Warranty: JACLO offers the above warranty for a period of one year from date of purchase to purchasers of products for industrial, commercial, business and all non-private residential uses.

