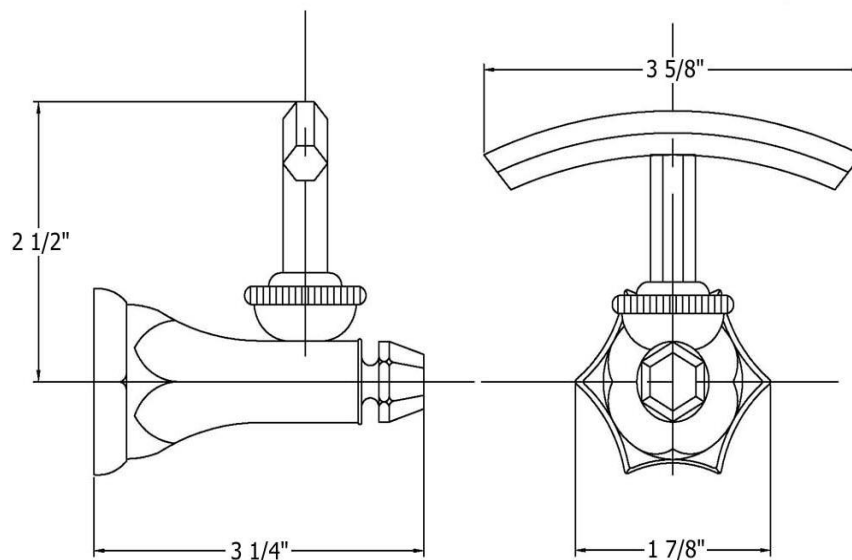


3812 – ‘Monarque’ Robe Hook



Technical Information

- Projection: 3 1/4".
- Available finishes are French Weathered Brass (47), Polished Chrome (48), SoliBrass (49), Lacquered Matte Black Nickel (50), Old Gold (52), Old Silver (53), Polished Brass (55), Polished Nickel (56), Brushed Nickel (57), Satin Nickel (60), Antique Lacquered Copper (67), Antique Lacquered Brass (68), Weathered Brass (70), Lacquered Polished Black Nickel (71) and Lacquered Polished Copper (80).
- Please See Cleaning Instructions: <http://herbeau.com/CleaningAll.pdf> For Finish Care and Maintenance Information.

Part#

Description

- | | |
|----|------------------------------|
| 01 | Screw |
| 02 | Monarque Wall Support |
| 03 | Monarque Escutcheon Button |
| 04 | Monarque Slide Bar Connector |
| 05 | Robe Hook Assembly |

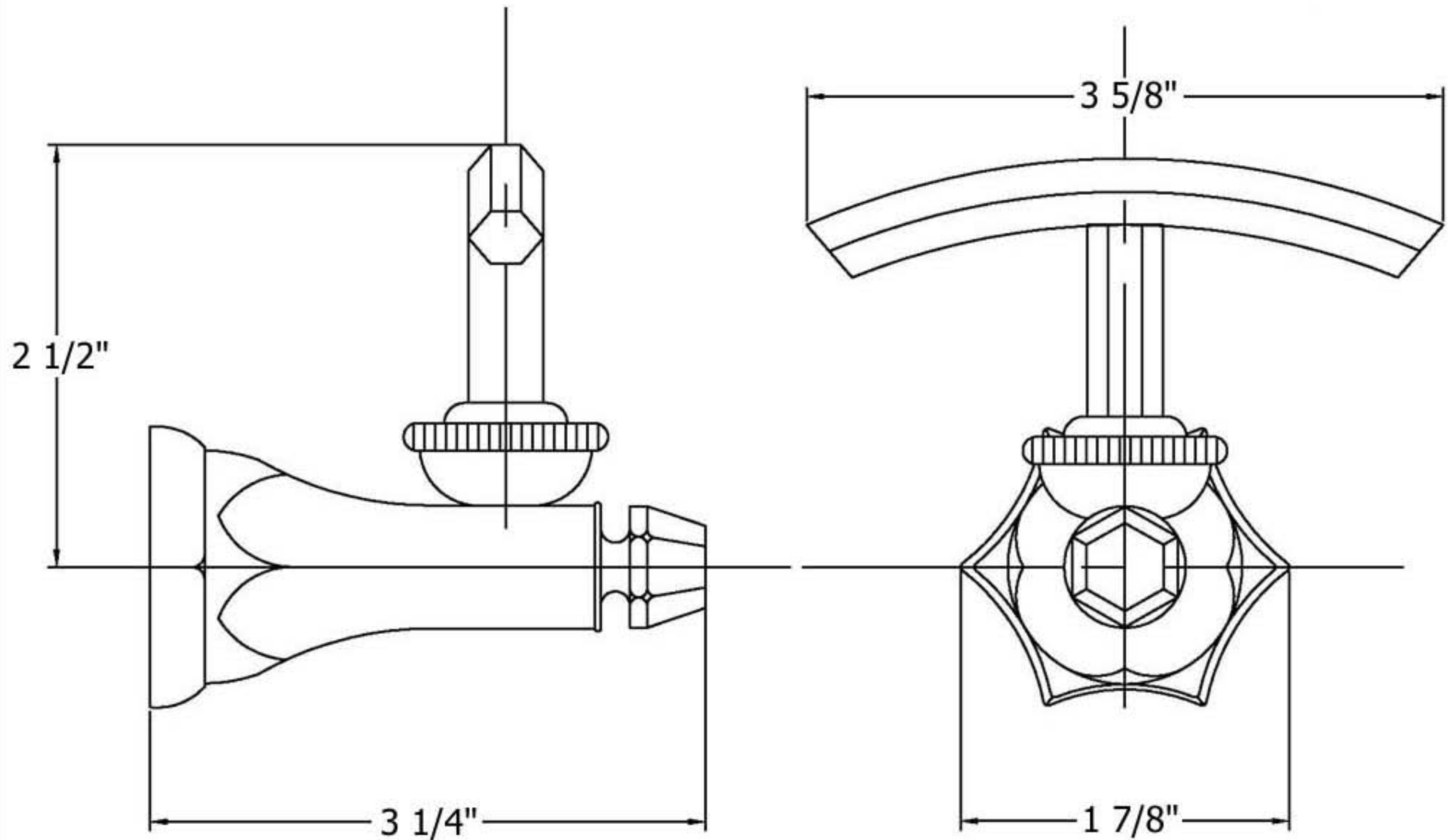
Please follow example when ordering parts for ‘Monarque’ Robe Hook

- To order part #02 – Monarque Wall Support
 - 990425xx
- Please substitute finish number needed in place of xx



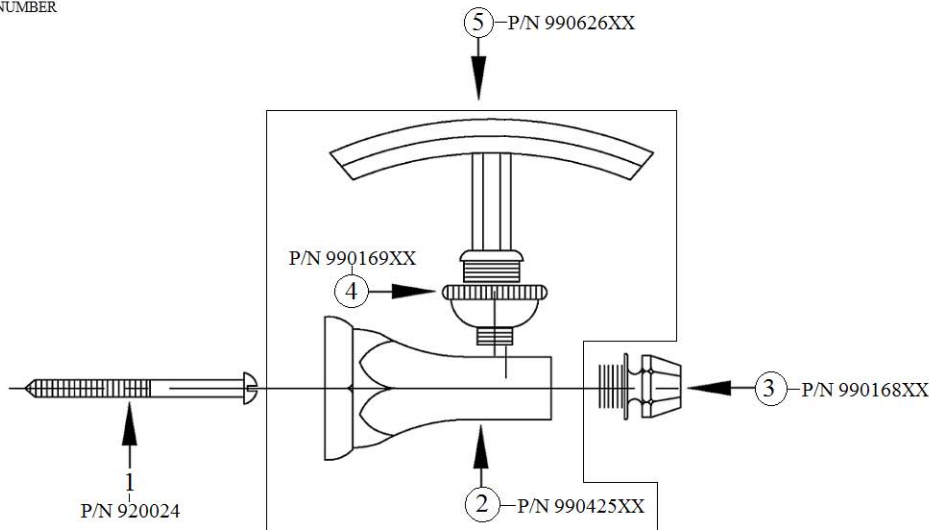
Herbeau®
L'Art du Sanitaire depuis 1857

3812 - 'Monarque' Robe Hook



3812 - 'Monarque' Robe Hook

*P/N = PART NUMBER



= FINISHED PARTS

XX = TWO DIGIT FINISH CODE