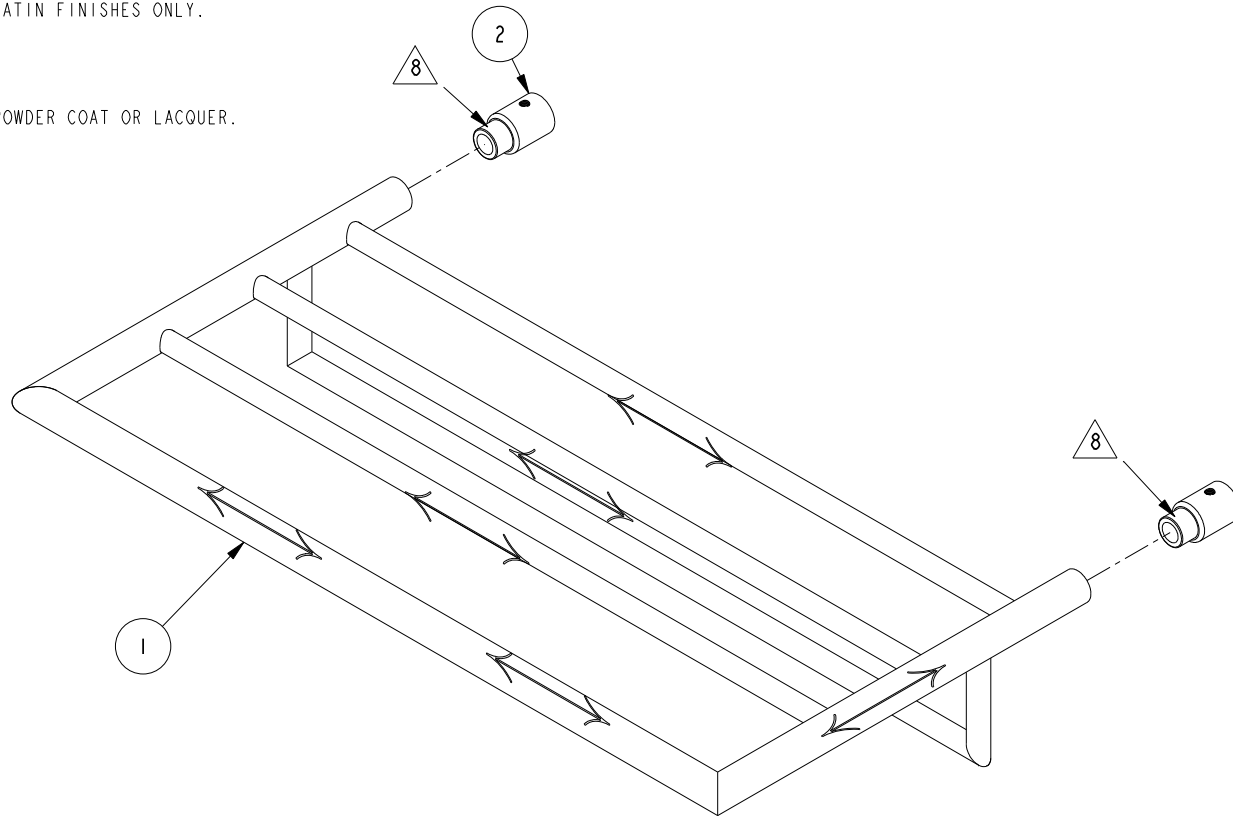


NOTES:

- (N1) 1. RAW METAL PARTS SHALL BE PURCHASED EXTERIOR POLISHED AND BUFFED.
FOR MATERIAL SPECIFICATIONS SEE PS-E.001.
FOR FINISH SPECIFICATIONS SEE SOP-Q.001 AND PS-Q.007
- (N2) 2. UNDIMENSIONED PART FEATURES SHALL COMPLY WITH 3D CAD DATA TO MAINTAIN DESIGN INTENT.
- 3. AESTHETIC DIMENSION SHALL COMPLY WITH PS-E.002 TO MAINTAIN DESIGN INTENT.
- (N4) 4. THREAD MASKING SHALL COMPLY WITH SOP-F.002.
- (N5) 5. \longleftrightarrow INDICATES STROKE DIRECTION FOR SATIN FINISHES ONLY.
- 6. DO NOT POLISH THIS SURFACE.
- 7. MASK THIS SURFACE PRIOR TO COPPERPLATE, POWDER COAT OR LACQUER.
- (N8) 8. BRAZING SHALL FOLLOW PS-E.001.

BILL OF MATERIAL (CURRENT LEVEL)

ITEM	PT/ASSY	DESCRIPTION	TYPE	QTY.
1	8-225	20" TOWEL SHELF FRAME	ASSEMBLY	1
2	40629	TOWEL SHELF SLEEVE	PART	2



ZONE	REV	DESCRIPTION	DATE	APPROVED
-	C	EN-2949	01/13/16	J.M.
-	B	EN-2518	04/30/13	-
-	A	EN-2379	12/07/12	-
-	-	EN-2062	02/02/12	-

COPYRIGHT 2005 BRASSTECH, INC.
THESE DRAWINGS AND THE DESIGNS
DEPICTED HEREIN ARE THE PROPRIETARY
PROPERTY OF BRASSTECH. ANY USE
OR REPRODUCTION IS SUBJECT TO
THE EXPRESS APPROVAL OF BRASSTECH.
UNAUTHORIZED USE IS STRICTLY
PROHIBITED. ALL RIGHTS RESERVED.

TESTING	-	-	-
ASSEMBLY	-	NEXT ASSY	USED ON
PLATING	-	APPLICATION	
POLISHING	-	REMOVE ALL BURRS AND SHARP EDGES	
MACHINING	-	MATERIAL	
TOOLING FIXTURE #	-	FINISH	

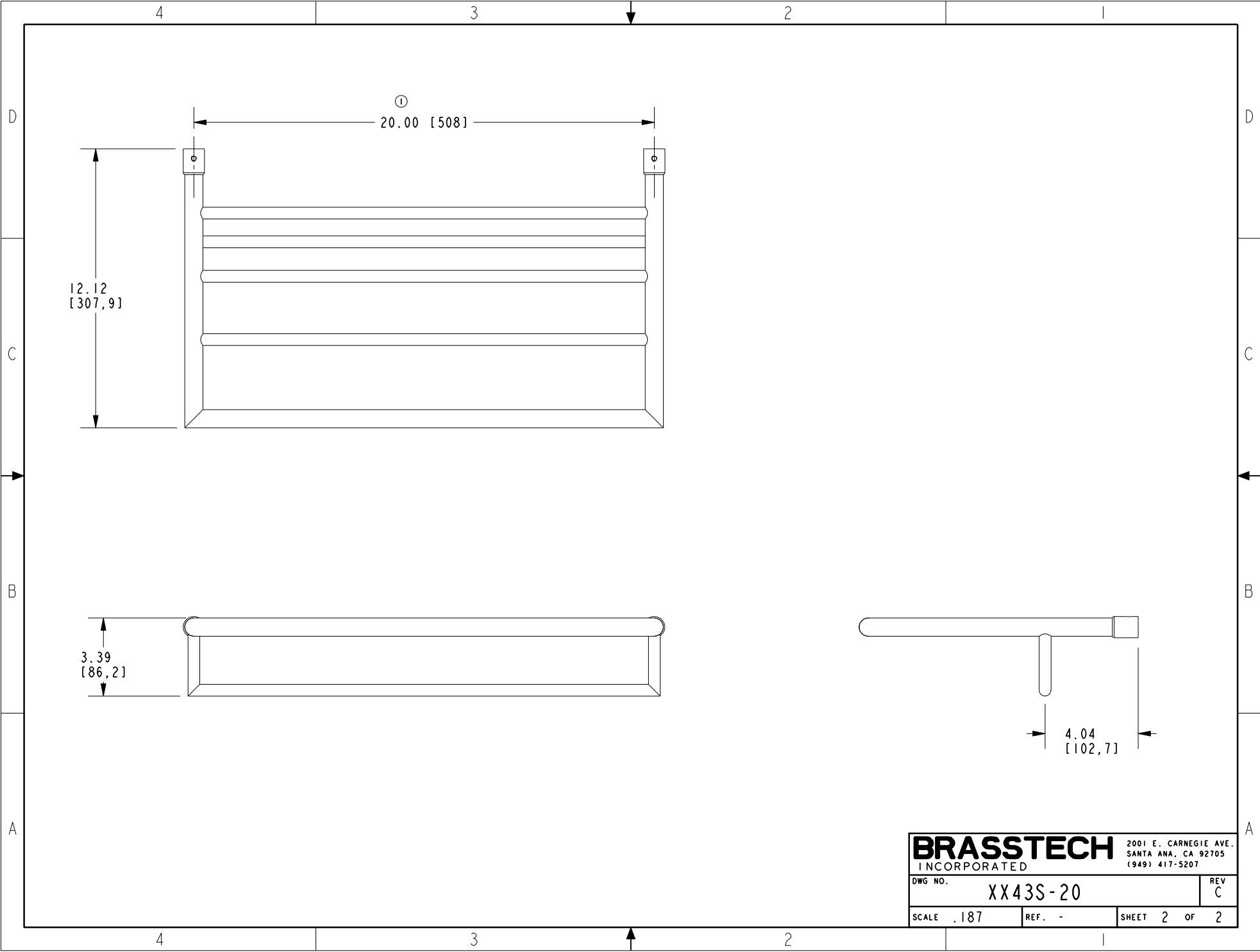
UNITS ARE: INCHES [MM]	
TOLERANCES ARE:	
FRACTIONS DECIMALS	ANGLES
$\pm 1/16"$	$\pm 1^\circ$
.X \pm .1 [2.5]	
.XX \pm .06 [1.5]	
(X.XXX) DENOTES CRITICAL DIMS.	
ALL THREADS ARE CRITICAL	
DRAWN	-
CHECKED	-
APPROVED	-

BRASSTECH 2001 CARNEGIE AVE.
INCORPORATED SANTA ANA, CA 92705
(949) 417-5207

HOTEL SHELF FRAME

DWG NO. **XX43S-20** REV C

SCALE .250 REF. - SHEET 1 OF 2



BRASSTECH		2001 E. CARNEGIE AVE.
INCORPORATED		SANTA ANA, CA 92705
		(949) 417-5207
DWG NO.	XX43S-20	REV C
SCALE .187	REF. -	SHEET 2 OF 2