



Sink - MEM

Single-lever lavatory mixer - polished chrome

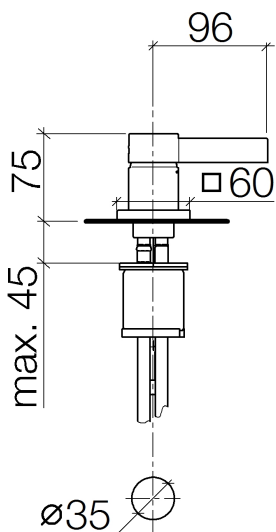
Article number: 29 210 782-00 0010

- 1-3/8" hole diameter
- Flange 2-3/8" x 2-3/8"
- 2x 3/8" US flexible supply lines
- (ADA)
- NOTE: Local building codes may require the use of an anti-scald device. Please refer to remote pressure balance valve (35 910 970 90)



polished chrome

Dimensional drawing

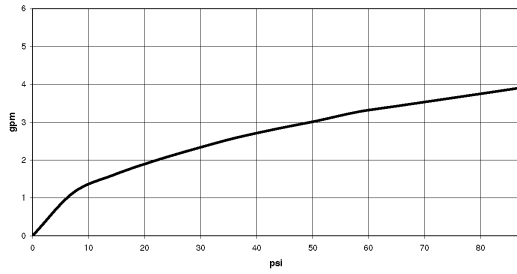


All dimensions in mm / inch = mm x 0,0394



Sink - MEM
Single-lever lavatory mixer - polished chrome
Article number: 29 210 782-00 0010

Flow rate chart





Sink - MEM

Single-lever lavatory mixer - polished chrome

Article number: 29 210 782-00 0010

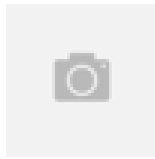
Other surface finishes



platinum matte
29 210 782-06 0010



platinum
29 210 782-08 0010



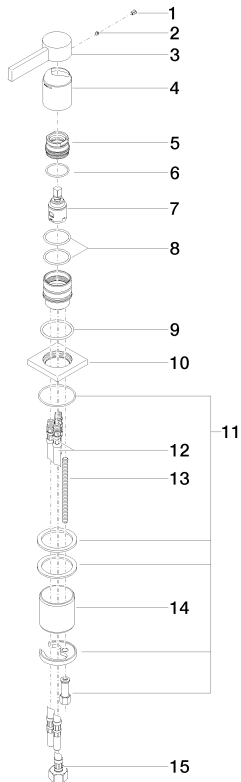
Brushed Durabrass
29 210 782-28 0010



Dark Platinum matte
29 210 782-99 0010

More custom finish options are available via special production (xTra Service). Please see our finish matrix for availability and pricing or contact a Dornbracht representative.

Spare parts list



| Number | Item Number | Designation | Number of units |
|--------|--------------------|---------------------------|-----------------|
| 1 | 09 31 20 017 90 | plug | 1 |
| 2 | 09 31 11 063 90 | pin | 1 |
| 3 | 09 20 78 057-00 | handle | 1 |
| 4 | 09 11 02 289-00 | cover | 1 |
| 5 | 09 24 04 288 90 | nut | 1 |
| 6 | 09 14 10 137 90 | seal | 1 |
| 7 | 90 15 05 042 00 90 | cartridge | 1 |
| 8 | 09 14 10 192 90 | seal | 2 |
| 9 | 09 14 10 050 90 | seal | 1 |
| 10 | 09 27 78 040-00 | rosette | 1 |
| 11 | 04 30 11 038 02 90 | fixing set | 1 |
| 12 | 04 30 04 045 00 90 | Flexible supply line 3/8" | 2 |
| 13 | 09 31 11 012 90 | pin | 1 |
| 14 | 09 18 40 079 90 | sleeve | 1 |
| 15 | 04 30 04 019 00 90 | hose | 1 |